

# VideoProbe® 300

## Remote Visual Inspection

### Video Performance at a Fiberscope Price

The VideoProbe 300 system combines portability, durability and the latest imaging technology to provide high-quality, high-resolution images with the clarity you need for making smart decisions fast. Vivid, magnified images reveal detailed defects for precise, accurate inspections. The camera head is designed to provide greater durability and protection in the most demanding inspection environments. No more fumbling with proximal cameras, cables and monitors. The system's integrated camera and LCD monitor make it easy to operate, while delivering over ten times the resolution of conventional fiberscopes. Simply remove from shipping case, plug in, and you're ready to inspect.

### Feature and Benefits

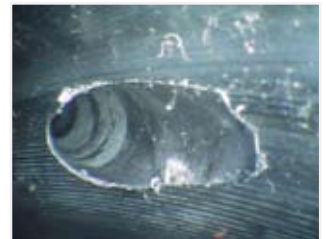
- High-resolution camera produces 500 HTV lines of resolution for sharp, clear video images
- High-resolution LCD integrated into hand-piece for ergonomic, detailed viewing
- Instant cableless setup promotes a faster, easier start to your inspections
- Automatic "HOME" tip centering offers easy navigation
- Durable bending neck design improves wear resistance
- Interchangeable tip optics support a wide range of applications
- All-Way™ tip articulation
- "LOCK" mode electronic brake holds accurate camera head position
- Insertion tube provides water resistance up to 14.7 psi



Chain Sprocket Assembly



Turbine Fan Blade



Master Cylinder Bored Hole



# Technical Specifications

## System

**Power Requirement:** AC: 100-240V 50-400Hz Nominal; min 90V, max 250V  
DC: 12V Nominal; min 11V, max 14V, max 10A

**Video Output:** S-Video & Composite, NTSC or PAL

**Weight:** In Case - 12.1 kg (26.6 lbs.)  
Without Case - 6.7 kg (13.4 lbs.)

**Case Dimensions:** 65.5 x 22.9 x 50.8 cm (25.0 x 9.0 x 20.0 in.)

## Light Source

**Type:** Solarc® Metal-Halide Arc

**Dimensions:** 24.1 x 27.6 x 7.6 cm (9.5 x 10.0 x 3.0 in.)

**Power:** 24W

**Output:** 1850 lumens

**Color Temperature:** 5500K

**Median Lamp Life:** 350 hours

## Camera

**Type:** 1/6" Color SUPER HAD CCD®

**Resolution\*\*:** 500 HTV lines S-Video, 460 HTV lines Composite  
380,000 pixels NTSC, 440,000 pixels PAL

**White Balance:** Factory Set

**Gain:** Auto

**Shutter Speed:** Electronic automatic from 1/60 sec to 1/10,000 sec

**Housing:** 5.0 mm and 6.1 mm - Titanium  
8.4 mm - Stainless Steel

## Hand-Piece

**Construction:** ABS with integrated Santoprene® bumpers

**Dimensions:** 30.5 x 14.7 x 12.7 cm (12.0 x 5.8 x 5.0 in.)

**Weight:** 2.3 kg (5 lbs.)

**LCD Monitor:** 12.7 cm (5.0 in.) active matrix TFT color LCD

**Joystick Control:** One-finger activated 360° All-Way® tip articulation

**Button Control:** LCD brightness, articulation lock, and "HOME"

## Accessories

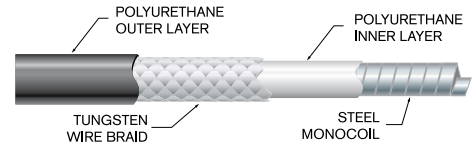
- Rigidizers
- Tube Gripper
- Magic Arm Kit
- Spare Lamp
- Interchangeable Tip Optics
- External Retrieval Tools
- PowerBar® 12V Battery Set



Shipping case

## Insertion Tube / Models

**Construction:** Durable tungsten braid over stainless steel monocoil with polyurethane sealant



**Articulation:**

Straight Tube	One Loop
Up/Down - 140° min	Up/Down - 120° min
Up/Down - 140° min	Up/Down - 120° min

**Note:** Typical articulation exceeds minimum specifications

**Models/Diameters/Lengths Articulation:**

Model Number	Diameter	Length
VP515A SYS or PALSYS	5.0 mm (0.20 in.)	1.5 m (4.9 ft.)
VP620A SYS or PALSYS	6.1 mm (0.24 in.)	2.0 m (6.6 ft.)
VP830A SYS or PALSYS	8.4 mm (0.33 in.)	3.0 m (9.8 ft.)
VP875A SYS or PALSYS	8.4 mm (0.33 in.)	7.5 m (25 ft.)

## Operating Environment

**System:** -20° to 46°C (-4° to 115°F)  
LCD requires warm-up period below 0°C (32°F)

**Camera Head:** -25° to 80°C (-13° to 176°F)  
Reduced articulation below 0°C (32°F)

**Storage Temperature:** -25° to 60°C (-13° to 140°F)

**Relative Humidity:** 95% maximum

**Waterproof:** Insertion tube and tip to 14.7 psi (1 bar)  
(Equivalent to water depth of 10.3 m (33.9 ft.))

**Environment:** Not rated for use in hazardous environment



## GE Inspection Technologies: productivity through inspection solutions

GE Inspection Technologies provides technology-driven inspection solutions that deliver productivity, quality and safety. We design, manufacture and service ultrasonic, remote visual, radiographic and eddy current equipment and systems. We offer specialized solutions that will help you improve productivity in your applications in the aerospace, power generation, oil & gas, automotive or metals industries.

[www.ge.com/inspectiontechnologies](http://www.ge.com/inspectiontechnologies)



**ISO 9001**  
REGISTERED COMPANY

