

VideoProbe® 500

Remote Visual Inspection

Entry-level Video Borescope with Image Capture

The VideoProbe 500 system combines portability, durability and the latest imaging technology to provide high-quality, high-resolution images with the clarity you need for making smart decisions fast. Vivid, magnified images reveal detailed defects for precise, accurate inspections. The camera head is designed to provide greater durability and protection in the most demanding inspection environments. No more fumbling with proximal cameras, cables and monitors. The system's integrated camera and LCD monitor make it easy to operate, while delivering over ten times the resolution of conventional fiberscopes. Simply remove from shipping case, plug in, and you're ready to inspect.

Feature and Benefits

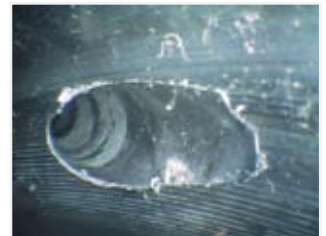
- High-resolution camera deliver sharp, clear video images
- High-resolution LCD integrated into hand-piece for ergonomic, detailed viewing
- Instant cableless setup promotes a faster, easier start to your inspections
- Durable bending neck design improves wear resistance
- Interchangeable tip optics support a wide range of applications
- All-Way® tip articulation
- "LOCK" mode electronic brake holds accurate camera head position
- Insertion tube provides water resistance up to 14.7 psi
- CompactFlash, Type 1
- Internal 64MB internal flash memory



Chain Sprocket Assembly



Turbine Fan Blade



Master Cylinder Bored Hole



Technical Specifications

System

Power Requirement: AC: 100-240V 50-400Hz Nominal; min 90V, max 250V
DC: 12V Nominal; min 11V, max 14V, max 10A

Video Output: S-Video & Composite, NTSC or PAL

Weight: In Case - 13.1 kg (30.2 lbs.)
Without Case - 7.7 kg (17.0 lbs.)

Case Dimensions: 65.5 x 22.9 x 50.8 cm (25.0 x 9.0 x 20.0 in.)

Processor / Light Source

Dimensions: 24.1 x 27.6 x 7.6 cm (9.5 x 10.0 x 3.0 in.)

Weight: 5.4 kg (12.0 lbs.)

Construction: Aluminum chassis with polyurethane bumpers

Processor: 32 bit Pentium-class embedded computer

Brightness Control: Automatic and Variable

Lamp Type: 50 W Metal-Halide Arc

Lamp Output: 2600 lumens at 5885K

Lamp Life: 1000 hrs., media

Keyboard Input: PS/2 style keyboard connector

Audio Speaker: Built-in front panel speaker with volume control knob

Audio Out Jack: RCA style connector, line-level audio out

Video Out: S-Video and Composite BNC

Camera

Type: 1/6" Color SUPER HAD CCD®

Resolution:** 380,000 pixels NTSC, 440,000 pixels PAL

White Balance: Factory Set

Gain: Auto

Shutter Speed: Electronic automatic from 1/60 sec to 1/10,000 sec

Housing: 5.0 mm and 6.1 mm - Titanium
8.4 mm - Stainless Steel

Hand-Piece

Construction: ABS with integrated Santoprene® bumpers

Dimensions: 30.5 x 14.7 x 12.7 cm (12.0 x 5.8 x 5.0 in.)

Weight: 2.3 kg (5 lbs.)

LCD Monitor: 12.7 cm (5.0 in.) active matrix TFT color LCD

Joystick Control: One-finger activated 360° All-Way® tip articulation

Button Control: LCD brightness, invert, zoom, articulation lock, and "HOME"

Accessories

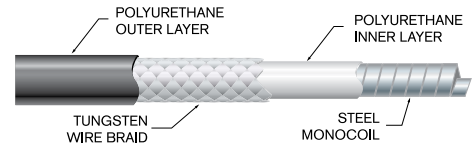
- Rigidizers
- Tube Gripper
- Magic Arm Kit
- Spare Lamp
- Interchangeable Tip Optics
- External Retrieval Tools
- PowerBar® 12V Battery Set



Shipping case

Insertion Tube / Models

Construction: Durable tungsten braid over stainless steel monocoil with polyurethane sealant



Articulation:

Length	Straight Tube
3.0 m and LESS	Up/Down - 140° min, Left/Right - 140° min
7.5 m	Up/Down - 110° min, Left/Right - 110° min

Note: Typical articulation exceeds minimum specifications

Models/Diameters/Lengths Articulation:

Model Number	Diameter	Length
VPD515A SYS or PALSYS	5.0 mm (0.20 in.)	1.5 m (4.9 ft.)
VPD620A SYS or PALSYS	6.1 mm (0.24 in.)	2.0 m (6.6 ft.)
VPD630A SYS or PALSYS	6.1 mm (0.24 in.)	3.0 m (9.8 ft.)
VPD660A SYS or PALSYS	6.1 mm (0.24 in.)	6.0 m (19.7 ft.)
VPD675A SYS or PALSYS	6.1 mm (0.24 in.)	7.5 m (24.6 ft.)
VPD820A SYS or PALSYS	8.4 mm (0.33 in.)	2.0 m (6.6 ft.)
VPD830A SYS or PALSYS	8.4 mm (0.33 in.)	3.0 m (9.8 ft.)
VPD860A SYS or PALSYS	8.4 mm (0.33 in.)	6.0 m (19.7 ft.)
VPD875A SYS or PALSYS	8.4 mm (0.33 in.)	7.5 m (24.6 ft.)

Operating Environment

System: -20° to 46°C (-4° to 115°F)
LCD requires warm-up period below 0°C (32°F)

Camera Head: -25° to 80°C (-13° to 176°F)
Reduced articulation below 0°C (32°F)

Storage Temperature: -25° to 60°C (-13° to 140°F)

Relative Humidity: 95% maximum

Waterproof: Insertion tube and tip to 14.7 psi (1 bar)
(Equivalent to water depth of 10.3 m (33.9 ft.))

Environment: Not rated for use in hazardous environment



GE Inspection Technologies: productivity through inspection solutions

GE Inspection Technologies provides technology-driven inspection solutions that deliver productivity, quality and safety. We design, manufacture and service ultrasonic, remote visual, radiographic and eddy current equipment and systems. We offer specialized solutions that will help you improve productivity in your applications in the aerospace, power generation, oil & gas, automotive or metals industries.

www.ge.com/inspectiontechnologies

